

## First Announcement and Call for Papers

NORMAN workshop

# Occurrence, fate and effects of emerging pollutants in the environment – chemical analysis and toxicological assessment

### Call for abstracts

This workshop is open for oral and poster contributions. We welcome abstracts of presentations with an indication of preference for oral or poster. All abstracts should be submitted to the Secretariat by **1 October 2012**.

Abstracts of all contributing lectures will be collected in the book of abstracts which will be issued to all participants upon registration.

The abstract should be written in English according to the following instructions :

- 1 page of A4 (210 x 197 mm, portrait)
- Single spaced
- Preferred font: Times New Roman, 11 pt (title in bold 14 pt, names of authors 12 pt)
- At least 3 cm margins on all sides
- Name(s) of the author(s), full address in the header
- Capitalize title
- Underline the name of the presenting author

All abstracts should be submitted to [marja.lamoree@vu.nl](mailto:marja.lamoree@vu.nl) by **1 October 2012**.

### Scientific committee

BfG – Germany

NIVA – Norway

EEA – Denmark

IVM – The Netherlands

Thomas Ternes

Kevin Thomas

Peter Pärt

Marja Lamoree

Jana Weiss

Pim Leonards

Timo Hamers

### Contact

Marja Lamoree

IVM - Institute for Environmental

Studies

VU University Amsterdam

The Netherlands

tel: +31 20 5989 573

email: [marja.lamoree@vu.nl](mailto:marja.lamoree@vu.nl)

**Organised by**  
The NORMAN network  
and  
IVM – Institute for Environmental Studies  
VU University, The Netherlands

**29 – 30 November 2012**

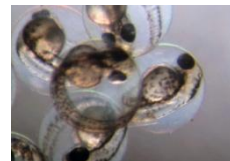
Amsterdam, The Netherlands

Deadline for abstract submission

**1 October 2012**

Deadline for early registration

**1 November 2012**



## Background & Objectives

The presence of emerging contaminants in the environment and their potential adverse effects are a source of constant concern. This workshop will bring together complementary lines of research to study the occurrence and behaviour of pollutants in our environment. It is vital to integrate both analytical chemical and toxicological approaches, especially with regard to identification of relevant toxicants – including their metabolites and transformation products.

This NORMAN workshop will be of great interest to research scientists and policy makers, and aims to provide an overview of the critical issues relating to emerging pollutants, such as the occurrence and fate of new compound classes – including metabolites and stable transformation products – and the development and implementation of non-target analysis techniques for monitoring and identification purposes. The development of novel, high-throughput biological tools for effect assessment of contaminants in complex mixtures and their use in Effect-Directed Analysis will also be highlighted.

## Date and Venue

The workshop will take place on 29 and 30 November 2012 at the Auditorium, VU University Amsterdam, The Netherlands. More information will be made available soon on the NORMAN website <http://www.norman-network.net/>

## Registration fee

1. Students and NORMAN partners €100 (after 1 November €150)
2. All other participants €200 (after 1 November €250)

Fee will cover attendance at the Workshop, the book of abstracts, coffee breaks and lunches during the two days and a workshop dinner on Thursday 29 November. Registration will open on 1 May 2012.

Deadline for early registration is **1 November 2012**.

Please register through the NORMAN website: <http://www.norman-network.net/>



## Preliminary topics and scientific programme

### Day 1 – Thursday 29 November

09:30

**Registration** in the Auditorium

10:00 – 17:30

**Sessions:**

1. Occurrence and fate of new compound classes including metabolites and transformation products.

*Invited speaker: Dana Kolpin, U.S. Geological Survey, U.S.*

2. Non-target analysis and identification strategies.

*Invited speaker: Félix Hernández, University Jaume I, Spain*

Evening

**Workshop dinner**, location to be announced at the workshop.

### Day 2 – Friday 30 November

09:00 – 15:00

**Sessions:**

3. Biological tools for effect assessment.

*Invited speaker: Anders Goksøyr, University of Bergen, Norway*

4. Effect-Directed Analysis – state of the art, trouble shooting and success stories.

*Invited speaker: Elizabeth Hill, University of Sussex, U.K.*

## NORMAN

The Network of reference laboratories and research centres for monitoring emerging environmental pollutants (NORMAN) is an independent and competent platform in the field of emerging pollutants. NORMAN facilitates an exchange of information, debate and research collaboration at the global level, with official recognition from institutional agencies of the EU.