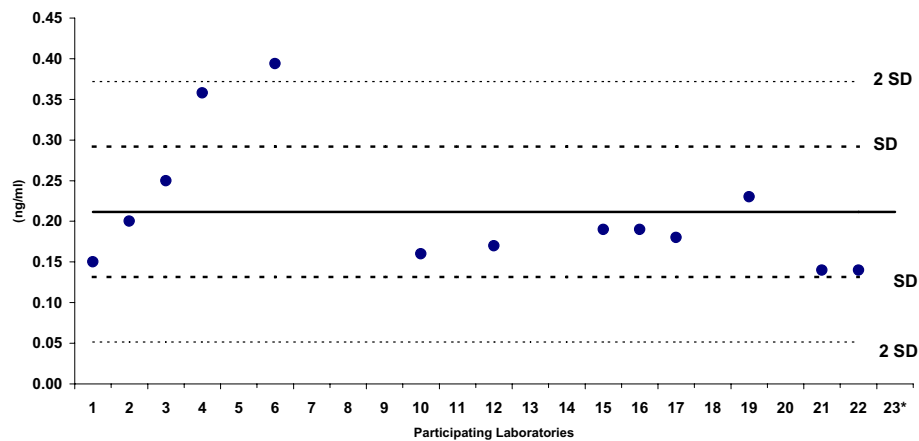


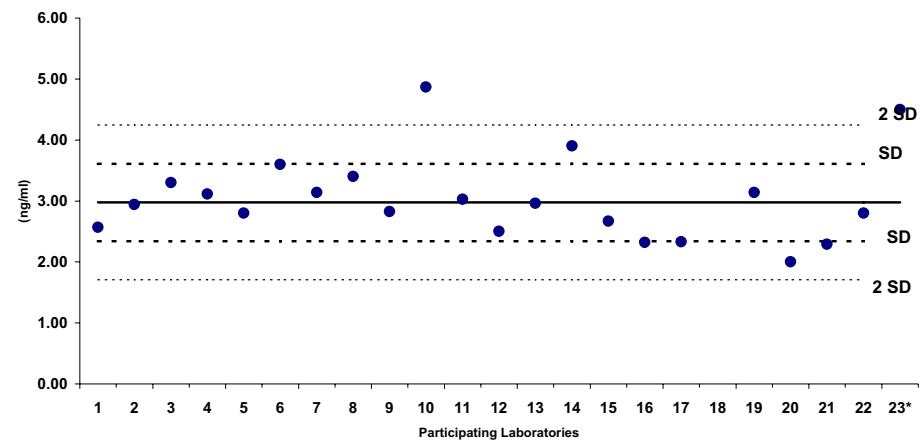
3rd Fluoros Inter calibration 2009															
Plasma A															
(ng/ml)															
Participant code:	Part 1	Part 2	Part 3	Part 4	Part 5	Part 6	Part 7	Part 8	Part 9	Part 10	Part 11	Part 12	Part 13	Part 14	Part 15
Date Received:	01/05/2009	28/04/2009	27/04/2009	June 8, 2009	April 29th	27/04/2009	27/04/2009	27/04/2009	April 27 2009			28/04/2009	April 25/2009	30/04/2009	16/05/2009
Date Analyzed:	15/06/2009	25/05/2009	25/06/2009	July 15, 2009	June 20th	10/06/2009	18/06/2009	27/04/2009	June 25 2009	08/06/2009	25/06/2009	01/06/2009	June 9/ 2009	02/06/2009	
Weight received:		1g			900 ul	*		Bottle Intact	1 ml	1000 µl			1 ml		0.9721 g
Weight analysed	1 ml	0.5g	150µl		900 ul	200 uL	100 µL	100 uL	0.3 g x 3	250 µl	0.2579		1 ml	100uL	0.4317g
PFCA															
PFBA	NA	0.20	<0.050	NA	ND	<0.0991	< 0.3	<1.0	ND	< 0.10	ND	NA	ND	NA	<0.125
PFPeA	NA	<0.2	<0.050	0.09	2.60	<0.248	< 0.15	NA	ND	< 0.10	ND	NA	ND	NA	NA
PFHxA	NA	<0.2	<0.050	0.33	<1	<0.0996	< 0.15	<1.0	ND	< 0.10	ND	0.03	ND	NA	0.07
PFHpA	0.15	0.20	0.25	0.36	<1	0.39	< 0.15	<1.0	1.70	0.16	ND	0.17	ND	ND	0.19
PFOA	2.57	2.94	3.30	3.11	2.80	3.60	3.14	3.40	2.83	4.87	3.03	2.50	2.96	3.90	2.67
PFNA	0.53	0.90	0.85	1.22	<1	0.95	1.02	<1.0	0.58	0.82	1.03	0.74	0.69	1.20	0.91
PFDA	ND	0.20	0.14	0.39	<1	0.32	< 0.1	<1.0	0.11	0.12	<0.4	0.17	0.22	0.30	0.24
PFUdA	ND	0.10	<0.050	0.37	5.00	0.15	< 0.2	NA	ND	0.24	ND	0.05	0.12	ND	0.14
PFDoA	ND	0.20	<0.050	0.26	6.90	<0.0245	< 0.03	NA	ND	< 0.10	ND	0.03	ND	ND	<0.025
PFTTrDA	0.07	NA	<0.050	0.04	NA	NA	< 0.4	NA	ND	NA	NA	ND	ND	NA	NA
PFTeDA	NA	NA	<0.050	0.13	<1	NA	NA	NA	ND	NA	NA	ND	ND	NA	<0.125
PFHxDA	NA	NA	NA	NA	NA	NA	NA	NA	NA	NA	NA	NA	ND	NA	<0.025
PFODA	NA	NA	NA	NA	NA	NA	NA	NA	NA	NA	NA	NA	ND	NA	<0.025
PFAS															
L-PFBS**	NA	<0.3	<0.050	0.01	ND	<0.0245	< 0.1	<1.0	ND	0.06	ND	NA	ND	ND	<0.125
L-PFHxS**	4.58	2.36	3.60	3.56	2.70	3.59	1.41	4.00	2.04	4.90	3.70	2.98	3.14	3.00	3.52
L-PFOS**	9.25	14.00	12.00	11.31	5.80	13.60	13.28	12.10	12.70	11.50	13.40	6.16	7.07	11.00	6.67
L-PFDS**	NA	NA	<0.050	0.002	ND	NA	< 0.03	NA	NA	< 0.10	NA	ND	ND	NA	<0.125
Other PFCs optional															
Branched PFOS									5.55						1.91
Linear PFOS									7.15		7.96				4.43
Total									12.70		13.40				6.34
Quantification	Anion	Anion	Salt	Salt	Salt	NR	Salt	Salt	Salt	Salt	Anion	Salt	Salt	Salt	Salt
NaPFOS	522														
KPFOS	538														
PFOS	500														
PFOS anion	499														
NaPFOS ---> Anion	0.96														
KPFOS ---> Anion	0.93														
* Reported after the deadline, results not included in the statistical evaluation															
** Concentration for the salt (ng/ml)															
All values in ng/ml															
ND: not detected, < than value expected															
NA: not analyzed															

3rd Fluoros Intercalibration 2009														
Plasma A (ng/ml)														
Participant code:	Part 16	Part 17	Part 18	Part 19	Part 20	Part 21	Part 22	Part 23*						
Date Received:			NA	28/04/2009	27/04/2009									
Date Analyzed:	2009.6.24	2009.6.26	NA	15.-30.06.2009	1-30/06/2009	07/07/2009								
Weight received:	1ml	1ml	NA			9.425 g		0.9 ml						
Weight analysed	1ml	1ml	NA		100 µl	0.4665 g	0,5ml	0.5 ml						
PFCA									Average	Median	Min	Max	SD	%RSD
PFBA	ND	ND	NA	< 0.1	NA	<1.15	<0.1	NA	1.35	1.35	0.09	2.60	1.77	132%
PFPeA	ND	ND	NA	NA	NA	<1.19	<0.5	NA	0.14	0.07	0.03	0.33	0.16	114%
PFHxA	ND	ND	NA	< 0.1	NA	<0.20	<0.05	<0.3	0.32	0.19	0.14	1.70	0.41	127%
PFHpA	0.19	0.18	NA	0.23	NA	0.14	0.14	NA	0.32	0.19	0.14	1.70	0.41	127%
PFOA	2.32	2.33	NA	3.14	2.00	2.29	2.80	4.50	2.98	2.94	2.00	4.87	0.63	21%
PFNA	0.52	0.44	NA	0.93	NA	0.52	0.81	0.90	0.81	0.84	0.44	1.22	0.23	29%
PFDA	0.17	0.28	NA	0.27	NA	0.22	0.23	<0.3	0.23	0.22	0.11	0.39	0.08	35%
PFUdA	ND	ND	NA	0.17	NA	<0.18	NA	NA	0.70	0.15	0.05	5.00	1.61	229%
PFDoA	ND	ND	NA	< 0.1	NA	<0.18	<0.05	NA	1.85	0.23	0.03	6.90	3.37	182%
PFTriDA	ND	ND	NA	NA	NA	<0.18	<0.05	NA	0.05	0.05	0.04	0.07	0.024	45%
PFTeDA	ND	ND	NA	NA	NA	<0.17	<0.05	NA	0.13	0.13	NA	NA	NA	NA
PFHxDA	NA	NA	NA	NA	NA	NA	NA	NA	NA	NA	NA	NA	NA	NA
PFODA	NA	NA	NA	NA	NA	NA	NA	NA	NA	NA	NA	NA	NA	NA
PFAS														
L-PFBS**	ND	ND	NA	NA	NA	<1.40	<0.2	<0.4	0.03	0.03	0.01	0.06	0.036	105%
L-PFHxS**	2.85	3.25	NA	3.81	NA	3.14	3.50	1.90	3.28	3.38	1.41	4.90	0.80	25%
L-PFOS**	5.08	4.55	NA	12.97	5.70	12.76	8.10	6.70	9.95	11.31	4.55	14.00	3.29	33%
L-PFDS**	ND	ND	NA	NA	NA	NA	NA	NA	NA	NA	NA	NA	NA	NA
Other PFCs optional														
Branched PFOS								2.70						
Linear PFOS														
Total														
Quantification	NR	NR	NR	Salt	Anion	NR	Anion	Anion						
NaPFOS														
KPFOS														
PFOS														
PFOS anion														
NaPFOS ---> Anion														
KPFOS ---> Anion														
* Reported after the deadline, results not in														
** Concentration for the salt (ng/ml)														
All values in ng/ml														
ND: not detected, < than value expected														
NA: not analyzed														

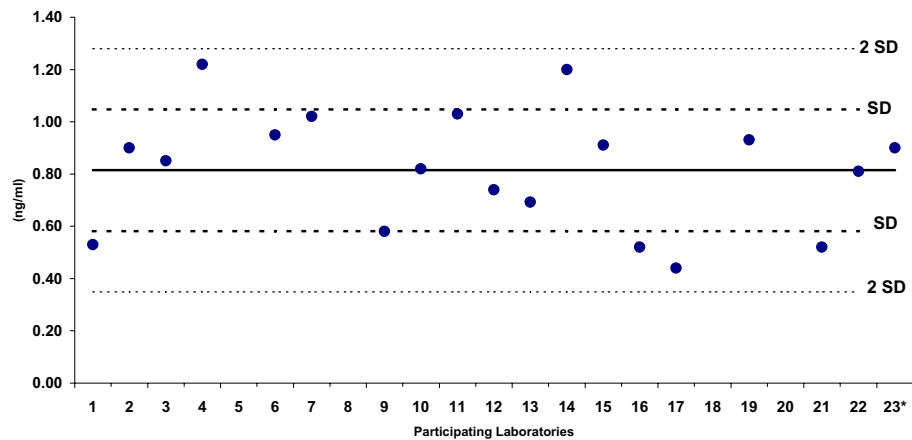
PFHpA (RSD 38%, n =13)



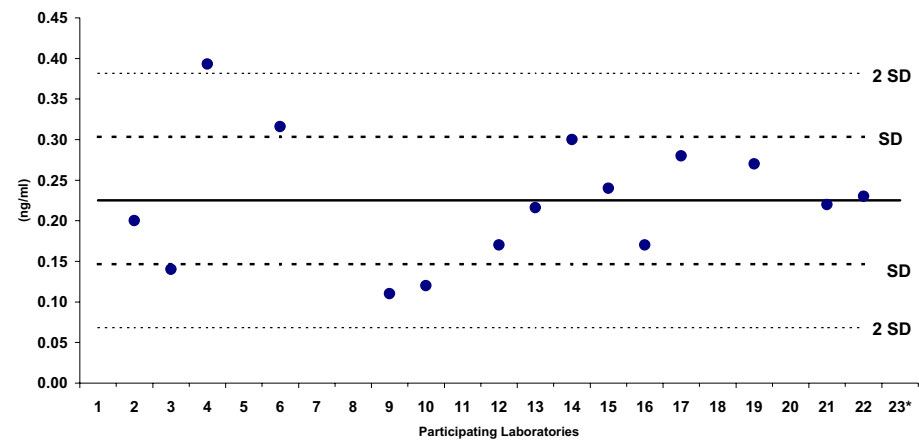
PFOA (RSD 21%, n =21)



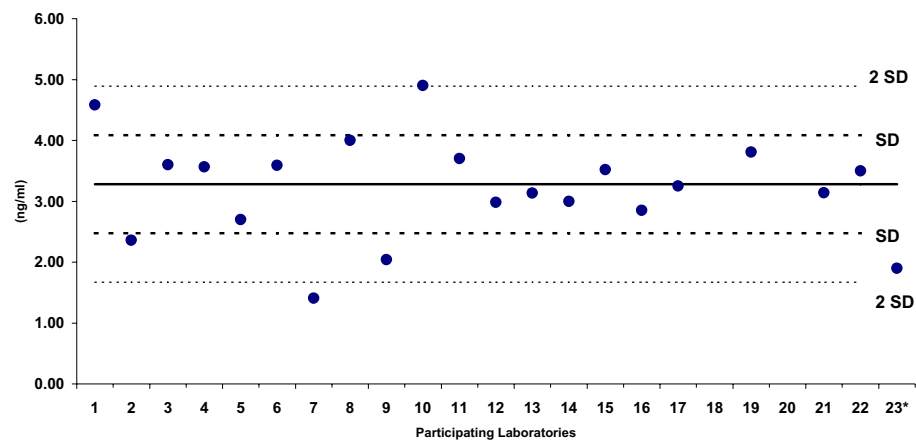
PFNA (RSD 29%, n =18)



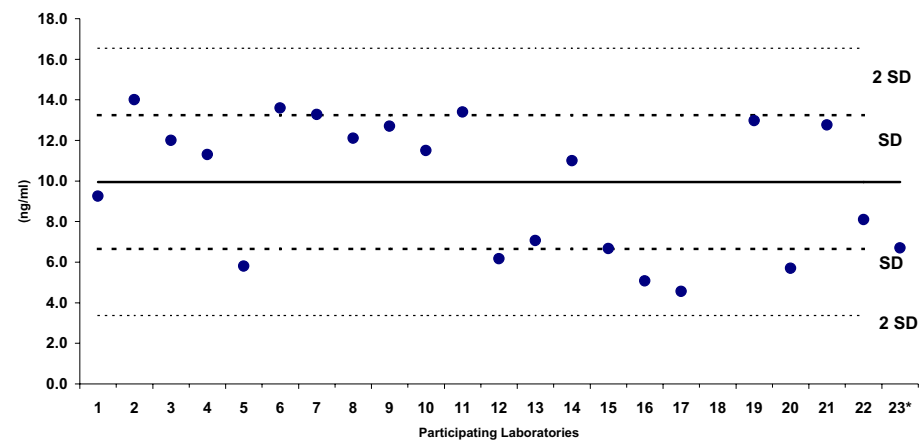
PFDA (RSD 35%, n =15)



PFHxS (RSD 25%, n =20)



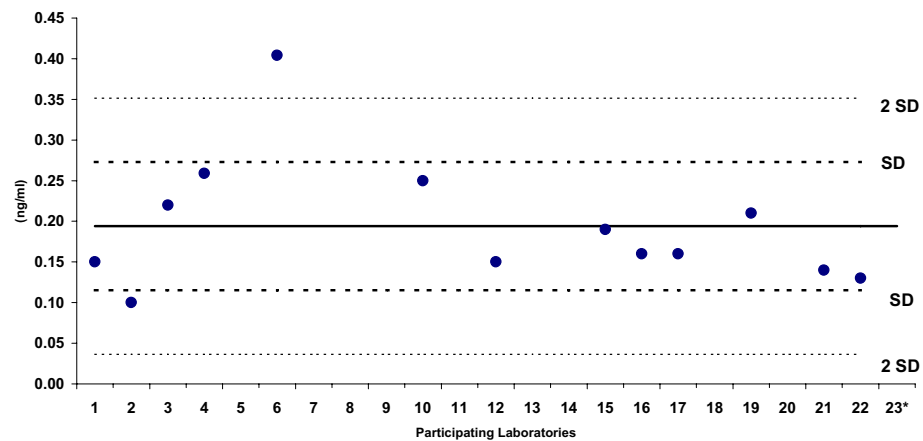
PFOS (RSD 33%, n =21)



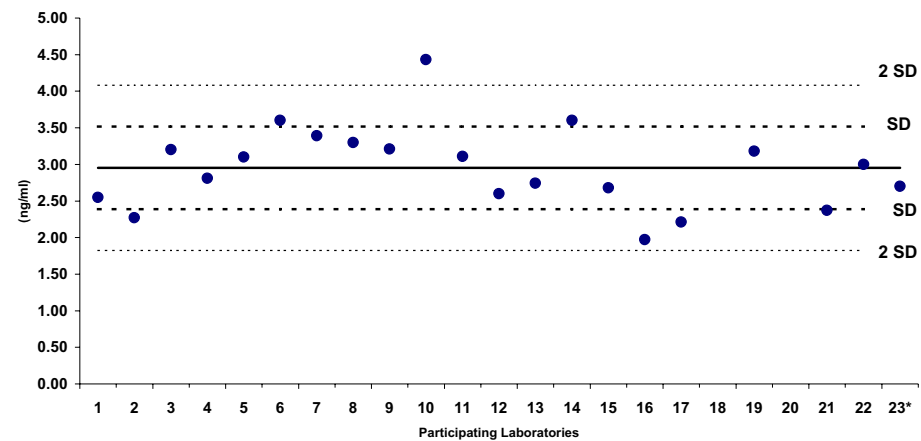
3rd Fluoros Inter calibration 2009																
Plasma B (ng/ml)																
Participant code:	Part 1	Part 2	Part 3	Part 4	Part 5	Part 6	Part 7	Part 8	Part 9	Part 10	Part 11	Part 12	Part 13	Part 14	Part 15	Part 16
Date Received:	01/05/2009	28/04/2009	27/04/2009		April 29th	27/04/2009	27/04/2009	27/04/2009	April 27 2009			28/04/2009	April 25/2009	30/04/2009	16/05/2009	
Date Analyzed:	15/06/2009	25/05/2009	25/06/2009		June 20th	10/06/2009	18/06/2009	27/04/2009	June 25 2009	08/06/2009	25/06/2009	01/06/2009	June 9/2009	02/06/2009		2009.6.24
Weight received:		1g			890 ul	*		Bottle Intact	1 ml	1000 µl			1 ml		0.9732 g	1ml
Weight analysed	1 ml	0.5g	150µl		890 ul	200 uL	100 µL	100 uL	0.3 g x 3	250 µl	0.2516		1 ml	100uL	0.4199g	1ml
PFCA																
PFBA	NA	0.20	<0.050	NA	ND	<0.0991	< 0.3	<1.0	ND	< 0.10	ND	NA	ND	NA	<0.125	ND
PFPeA	NA	<0.2	<0.050	0.08	2.90	<0.248	< 0.15	NA	ND	0.13	ND	NA	ND	NA	NA	ND
PFHxA	NA	<0.2	<0.050	0.26	<1	<0.0996	< 0.15	<1.0	ND	< 0.10	ND	0.04	ND	NA	0.07	ND
PFHpA	0.15	0.10	0.22	0.26	<1	0.40	< 0.15	<1.0	1.10	0.25	ND	0.15	ND	ND	0.19	0.16
PFOA	2.55	2.27	3.20	2.81	3.10	3.60	3.39	3.30	3.21	4.43	3.11	2.60	2.74	3.60	2.68	1.97
PFNA	0.54	0.70	0.86	1.01	1.00	0.96	0.95	<1.0	0.83	1.10	0.90	0.76	0.65	1.20	0.97	0.63
PFDA	ND	0.20	0.13	0.27	<1	0.31	< 0.1	<1.0	0.11	0.35	<0.4	0.19	0.19	0.30	0.26	0.18
PFUdA	ND	0.20	<0.050	0.15	5.20	0.15	< 0.15	NA	ND	0.14	ND	0.05	0.10	0.20	0.14	ND
PFDoA	ND	0.20	<0.050	0.03	7.00	0.03	< 0.03	NA	ND	< 0.10	ND	ND	ND	ND	<0.025	ND
PFTTrDA	0.05	NA	<0.050	0.00	NA	NA	< 0.4	NA	ND	NA	NA	ND	ND	NA	NA	ND
PFTeDA	NA	NA	<0.050	0.01	<1	NA	NA	NA	ND	NA	NA	ND	ND	NA	<0.125	ND
PFHxDA	NA	NA	NA	NA	NA	NA	NA	NA	NA	NA	NA	NA	ND	NA	<0.025	NA
PFODA	NA	NA	NA	NA	NA	NA	NA	NA	NA	NA	NA	NA	ND	NA	<0.025	NA
PFAS																
L-PFBS**	NA	<0.3	<0.050	0.02	ND	<0.0245	< 0.1	<1.0	ND	< 0.10	ND	NA	ND	ND	<0.125	ND
L-PFHxS**	4.66	2.35	3.50	3.02	3.00	3.70	1.39	3.70	1.99	5.60	3.53	3.18	3.13	2.80	3.81	3.04
L-PFOS**	8.99	10.70	11.00	11.33	7.00	13.60	13.07	12.20	13.30	12.40	12.20	6.21	6.82	11.50	6.93	5.20
L-PFDS**	NA	NA	<0.050	0.00	ND	NA	< 0.03	NA	NA	< 0.10	NA	ND	ND	NA	<0.125	ND
Other PFCs optional																
Branched PFOS									5.80		6.78		ND		2.10	
Linear PFOS									7.50		12.2				4.47	
Total									13.30							
Quantification	Anion	Anion	Salt	Salt	Salt	NR	Salt	Salt	Salt	Salt	Anion	Salt	Salt	Salt	Salt	NR
NaPFOS	522															
KPFOS	538															
PFOS	500															
PFOS anion	499															
NaPFOS ----> Anion	0.96															
KPFOS ----> Anion	0.93															
* Reported after the deadline, results not included in the statistical evaluation																
** Concentration for the salt (ng/ml)																
All values in ng/ml																
ND: not detected, < than value expected																
NA: not analyzed																

3rd Fluoros Inter calibration 2009													
Plasma B (ng/ml)													
Participant code:	Part 17	Part 18	Part 19	Part 20	Part 21	Part 22	Part 23*						
Date Received:		NA	28/04/2009	27/04/2009									
Date Analyzed:	2009.6.26	NA	15.-30.06.2009		07/07/2009								
Weight received:	1ml	NA			5.9292 g		0.9ml						
Weight analysed	1ml	NA			0.4956 g	0.5ml	0.5 ml						
PFCA								Average	Median	Min	Max	SD	%RSD
PFBA	ND	NA	< 0.1	NA	<0.94	<0.1	NA	1.04	0.13	0.08	2.90	1.61	156%
PFPeA	ND	NA	NA	NA	<1.06	<0.5	NA	0.12	0.07	0.04	0.26	0.12	97%
PFHxA	ND	NA	< 0.1	NA	<0.18	<0.05	<0.3	0.26	0.18	0.10	1.10	0.25	98%
PFHpA	0.16	NA	0.21	NA	0.14	0.13	NA	2.97	3.05	1.97	4.43	0.58	19%
PFOA	2.21	NA	3.18	NA	2.37	3.00	2.70	0.83	0.86	0.52	1.20	0.19	23%
PFNA	0.52	NA	0.90	NA	0.62	0.70	2.70	0.23	0.25	0.11	0.35	0.07	29%
PFDA	0.28	NA	0.28	NA	0.22	0.25	<0.3	0.65	0.15	0.05	5.20	1.60	247%
PFUdA	ND	NA	0.15	NA	<0.14		NA	1.81	0.12	0.03	7.00	3.46	191%
PFDoA	ND	NA	< 0.1	NA	<0.15	<0.05	NA	0.03	0.03	0.004	0.05	0.033	120%
PFTTrDA	ND	NA	NA	NA	<0.14	<0.05	NA	0.01	0.01	NA	NA	NA	NA
PFTeDA	ND	NA	NA	NA	<0.14	<0.05	NA	NA	NA	NA	NA	NA	NA
PFHxDA	NA	NA	NA	NA	NA	NA	NA	NA	NA	NA	NA	NA	NA
PFODA	NA	NA	NA	NA	NA	NA	NA	NA	NA	NA	NA	NA	NA
PFAS													
L-PFBS**	ND	NA	NA	NA	<1.22	<0.2	<0.4	0.02	0.02	NA	NA	NA	NA
L-PFHxS**	3.04	NA	3.84	NA	3.05	3.60	2.60	3.30	3.15	1.39	5.60	0.89	27%
L-PFOS**	5.01	NA	13.19	NA	13.70	8.90	10.50	10.16	11.17	5.01	13.70	3.00	29%
L-PFDS**	ND	NA	NA	NA	NA	NA		0.003	0.003	NA	NA	NA	NA
Other PFCs optional													
Branched PFOS	ND	NA		NA			3.80						
Linear PFOS		NA		NA									
Total													
Quantification	NR	NR	Salt	Anion	NR	Anion							
NaPFOS KPFOS PFOS PFOS anion NaPFOS ---> Anion KPFOS ---> Anion													
* Reported after the deadline, results not in ** Concentration for the salt (ng/ml) All values in ng/ml ND: not detected, < than value expected NA: not analyzed													

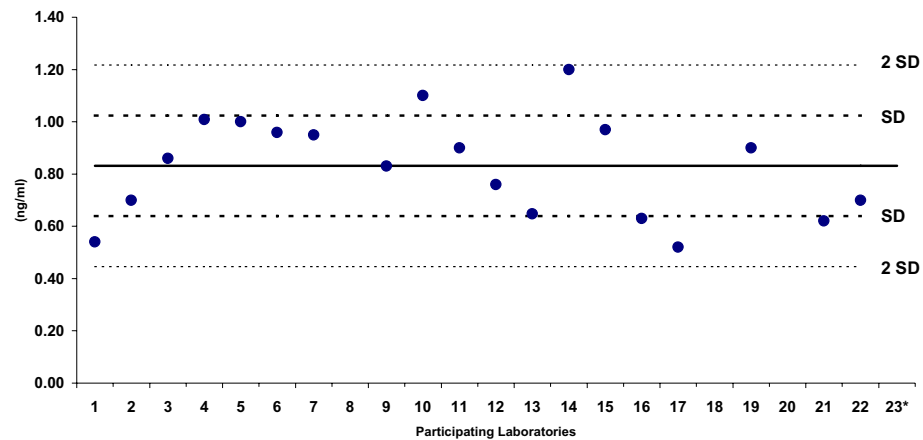
PFHpA (RSD 41%, n =13)



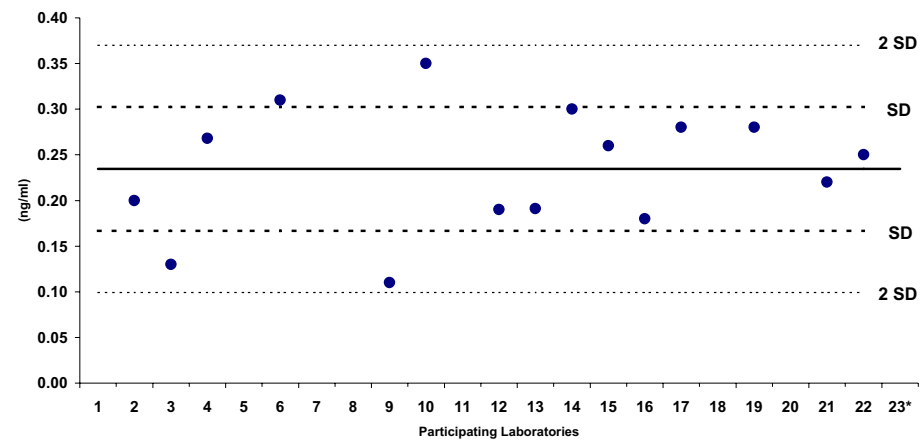
PFOA (RSD 19%, n =20)



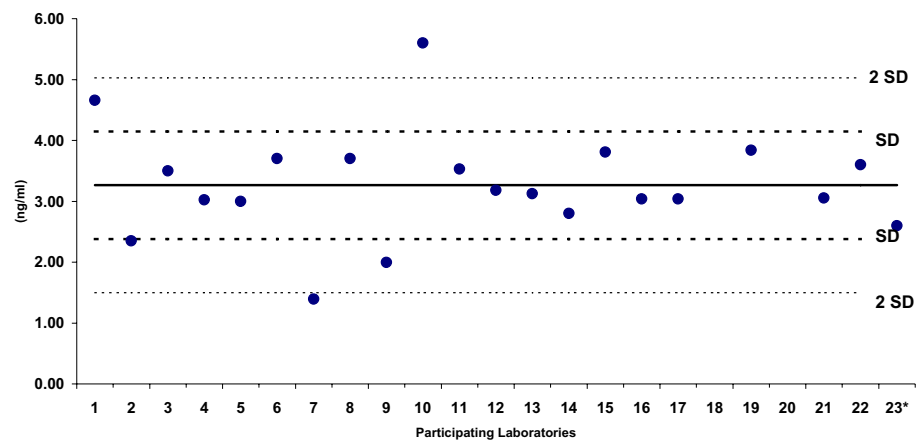
PFNA (RSD 23%, n =19)



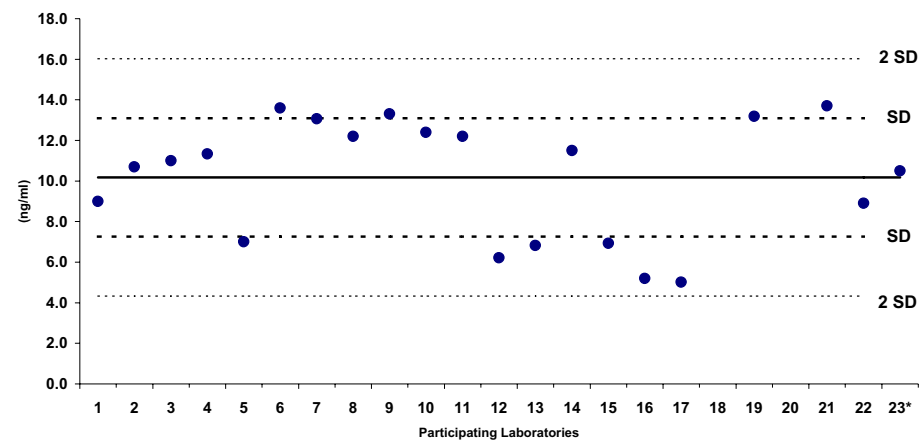
PFDA (RSD 29%, n =15)



PFHxS (RSD 27%, n =20)



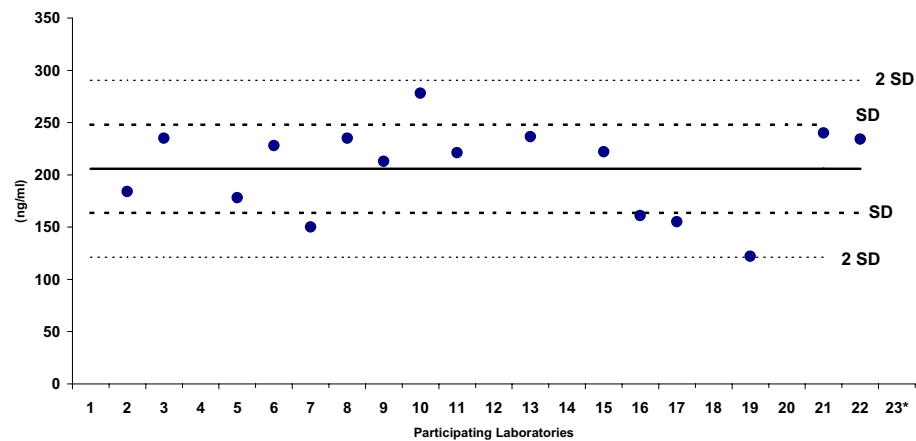
PFOS (RSD 29%, n =20)



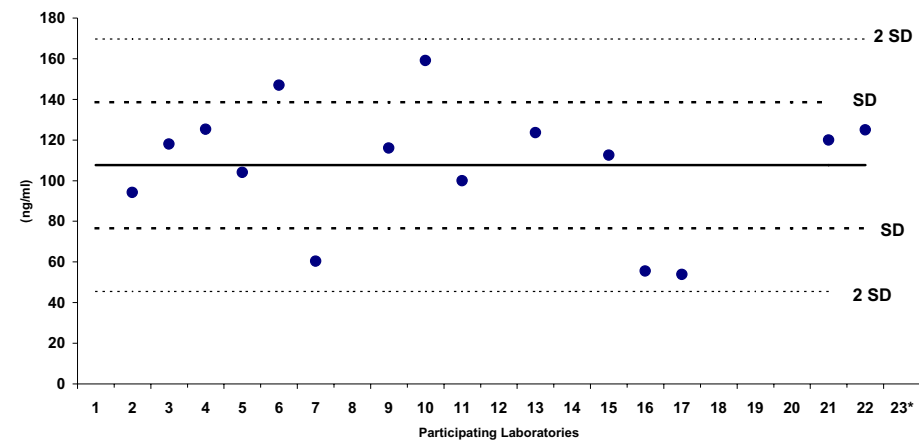
3 rd Fluoros Intercalibration 2009															
MX3 (ng/ml)															
Participant code:	Part 1	Part 2	Part 3	Part 4	Part 5	Part 6	Part 7	Part 8	Part 9	Part 10	Part 11	Part 12	Part 13	Part 14	Part 15
Date Received:		28/04/2009	27/04/2009		April 29th	27/04/2009	27/04/2009	27/04/2009				28/04/2009	April 29/2009	30/04/2009	16/05/2009
Date Analyzed:		23/05/2009	25/06/2009		June 20th	10/06/2009	03/07/2009	14/05/2009		08/06/2009	29/06/2009	01/06/2009	June 9/2009	24/06/2009	
Weight received:		1mL				*		Bottle Intact	1.2 ml				1.2 ml		0.9327 g
Weight analysed	1 ml	0.5mL	50µl			*		100 uL	0.4 -0.5 g	10 µl			0.3 ml	100uL or 25uL	10µL
PFCA															
PFBA	NA	184	235	NA	178	228	150	235	213	278	221	NA	237	NA	222
PFPeA	NA	94	118	125	104	147	60	NA	116	159	100	NA	124	NA	112
PFHxA	NA	133	145	167	132	149	111	168	155	191	131	108	172	NA	213
PFHpA	93	85	97	109	79	91	84	109	103	145	79	101	131	113	118
PFOA	209	214	264	244	215	316	546	297	242	295	259	256	298	227	240
PFNA	174	136	202	182	112	168	129	164	160	194	139	141	178	160	188
PFDA	150	114	111	123	114	128	27	123	106	138	101	119	130	102	132
PFUdA	72	79	82	123	63	87	69	NA	67	99	64	88	95	89	89
PFDoA	73	59	70	142	76	69	23	NA	81	109	56	75	84	79	88
PFTrDA	70	NA	79	179	NA	NA	140	NA	83	NA	NA	98	83	NA	NA
PFTeDA	NA	NA	74	186	106	NA	151	NA	85	NA	NA	122	79	NA	98
PFHxDA	NA	NA	NA	NA	NA	NA	NA	NA	NA	NA	NA	NA	77	NA	148
PFODA	NA	NA	NA	NA	NA	NA	NA	NA	NA	NA	NA	NA	77	NA	107
PFAS															
L-PFBS**	NA	141	165	152	117	150	59	148		190	107	NA	164	NA	129
L-PFHxS**	102	95	112	98	87	112	57	115	87	150	92	114	112	110	111
L-PFOS**	120	208	218	198	129	234	419	182	230	276	186	222	264	275	194
L-PFDS**	NA	NA	112	152	62	NA	18	NA		141	NA	94	91	NA	72
Other PFCs optional															
	*	*	*	*	*	*	*	*	*	*	*	*	*	*	*
	*	*	*	*	*	*	*	*	*	*	*	*	*	*	*
	*	*	*	*	*	*	*	*	*	*	*	*	*	*	*
Quantification															
	Anion	Anion	Salt	Salt	Salt	NR	Salt	Salt	Salt	Salt	Anion	Salt	Salt	Salt	Salt
NaPFOS															
	522														
KPFOS	538														
PFOS	500														
PFOS anion	499														
NaPFOS ---> Anion	0.96														
KPFOS ---> Anion	0.93														
* Reported after the deadline, results not included in the statistical evaluation															
** Concentration for the salt (ng/ml)															
All values in ng/ml															
ND: not detected, < than value expected															
NA: not analyzed															

3rd Fluoros Intercalibration 2009															
MX3 (ng/ml)															
Participant code:	Part 16	Part 17	Part 18	Part 19	Part 20	Part 21	Part 22	Part 23*							
Date Received:			NA	28/04/2009	27/04/2009										
Date Analyzed:	2009.6.24	2009.6.26	NA	15.-30.06.2009	1-30/06/2009	09/07/2009									
Weight received:	1.2ml	1.2ml	NA			x									
Weight analysed	0.1 ml	0.1 ml	NA			0.0407 g	NA								
PFCA									Average	Median	Min	Max	SD	%RSD	Design Value**
PFBA	161	155	NA	122	NA	240	234	NA	206	222	122	278	42	21%	240
PFPeA	56	54	NA	NA	NA	120	125	NA	108	116	54	159	31	29%	120
PFHxA	87	79	NA	117	NA	160	156	NA	143	147	79	213	35	24%	160
PFHpA	51	53	NA	92	NA	110	119	NA	98	99	51	145	23	24%	100
PFOA	208	207	NA	216	296	280	269	NA	267	256	207	546	73	27%	280
PFNA	102	98	NA	133	NA	150	134	NA	152	155	98	202	30	20%	160
PFDA	71	70	NA	101	NA	120	125	NA	110	117	27	150	28	25%	120
PFUdA	46	51	NA	68	NA	79	79	NA	78	79	46	123	18	23%	80
PFDoA	47	49	NA	47	NA	87	74	NA	73	74	23	142	25	35%	80
PFTTrDA	76	73	NA	NA	NA	87	71	NA	94	83	70	179	34	36%	80
PFTeDA	73	79	NA	NA	NA	87	71	NA	101	86	71	186	36	35%	80
PFHxDA	NA	NA	NA	NA	NA	NA	156	NA	127	148	77	156	43	34%	80
PFODA	NA	NA	NA	NA	NA	NA	95	NA	93	95	77	107	15	17%	80
PFAS															
L-PFBS**	89	85	NA	NA	NA	147	137	NA	132	141	59	190	35	26%	160
L-PFHxS**	83	81	NA	116	NA	116	117	NA	103	110	57	150	19	19%	120
L-PFOS**	155	146	NA	225	248	219	238	NA	218	219	120	419	64	29%	240
L-PFDS**	59	56	NA	NA	NA	NA	90	NA	86	90	18	152	39	46%	80
Other PFCs optional															
	*	*	*	*	*	*	*	*							
	*	*	*	*	*	*	*	*							
	*	*	*	*	*	*	*	*							
Quantification	NR	NR	NA	Salt	Anion	NR	Anion	NA							
NaPFOS KPFOS PFOS PFOS anion NaPFOS ---> Anion KPFOS ---> Anion															
* Reported after the deadline, results not in ** Concentration for the salt (ng/ml) All values in ng/ml ND: not detected, < than value expected NA: not analyzed															

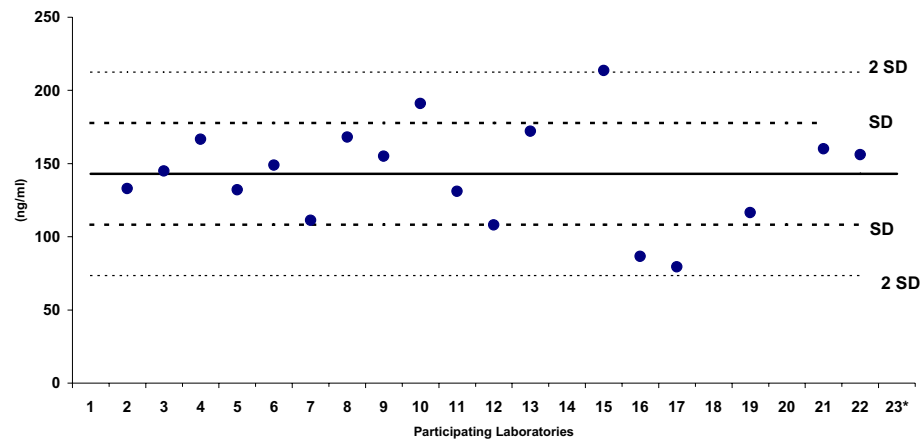
PFBA (RSD 21%, n =16)



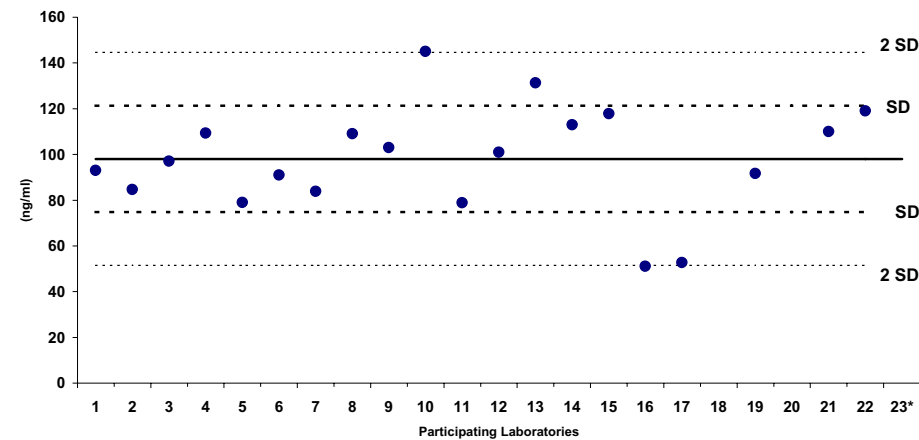
PFPeA (RSD 29%, n =16)



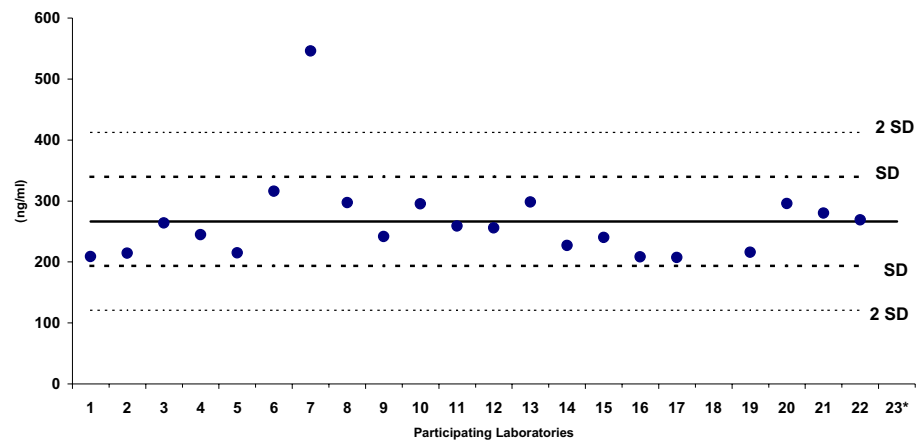
PFHxA (RSD 24%, n =18)



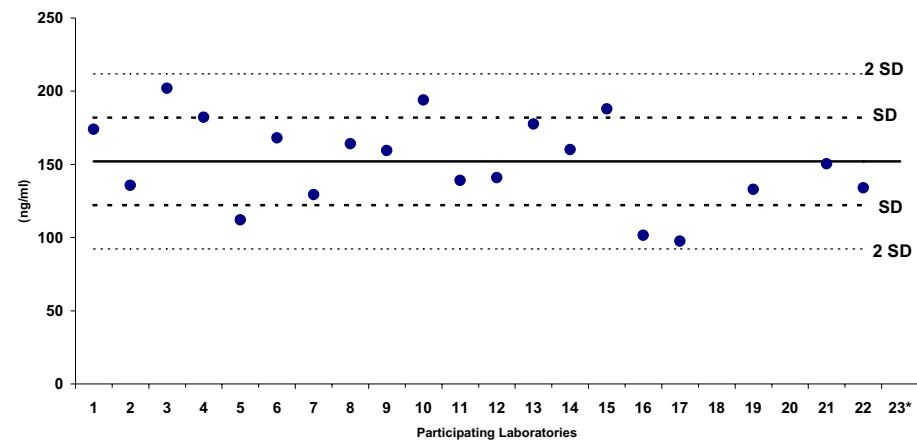
PFHpA (RSD 24%, n =20)



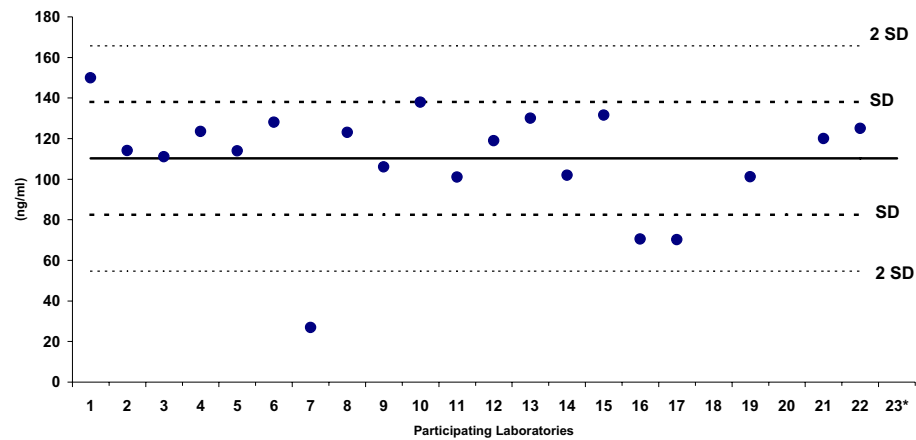
PFOA (RSD 27%, n =21)



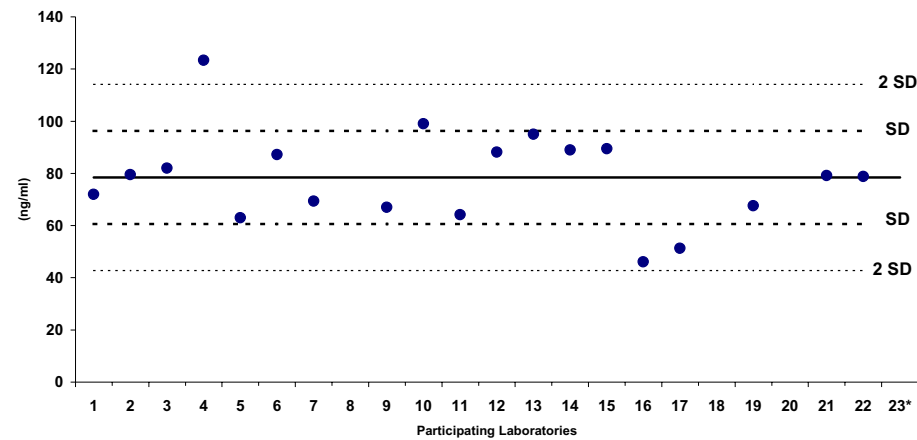
PFNA (RSD 20%, n =20)



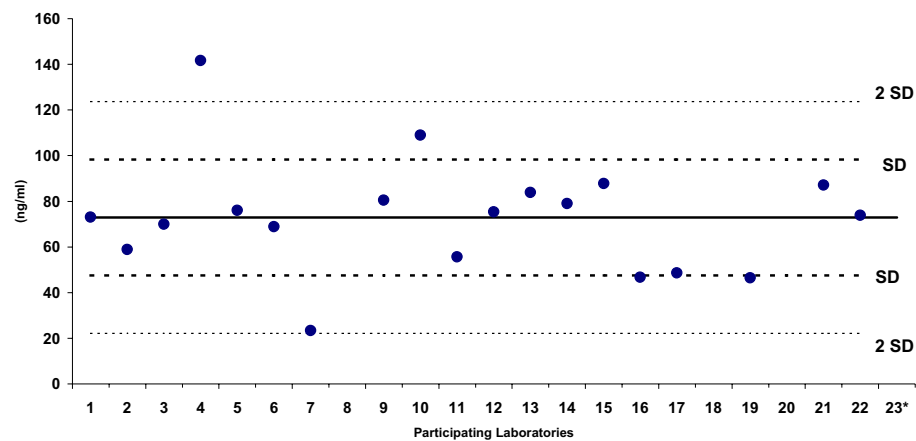
PFDA (RSD 25%, n =20)



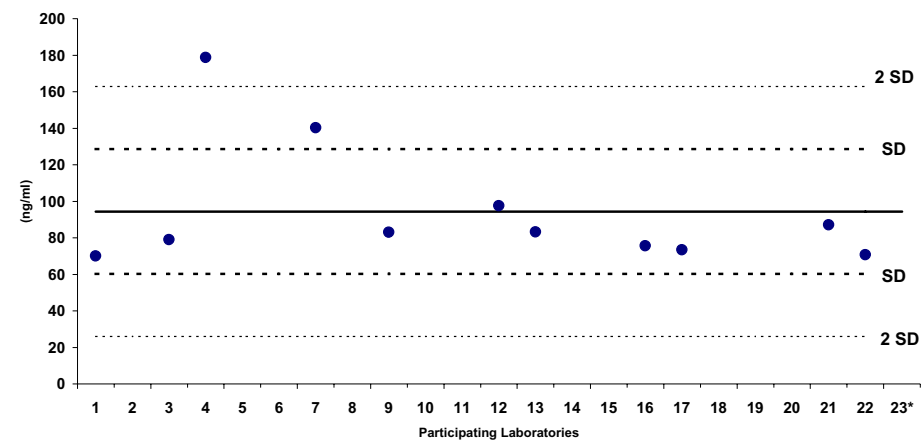
PFUDA (RSD 23%, n =19)



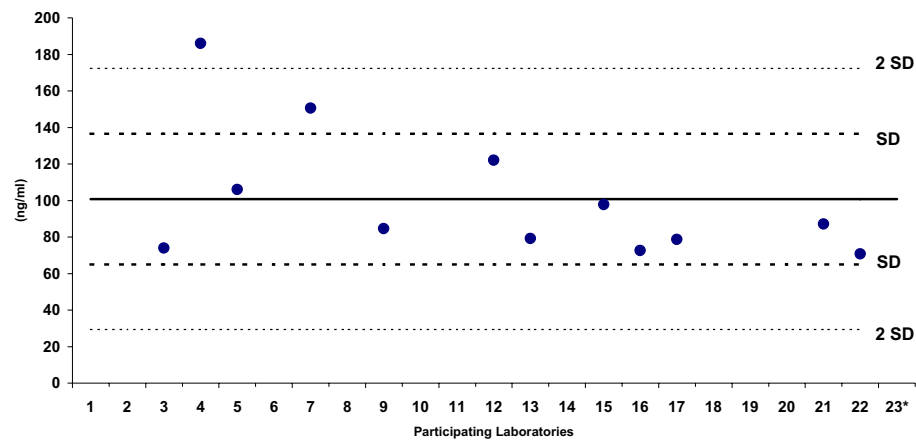
PFD_oA (RSD 35%, n =19)



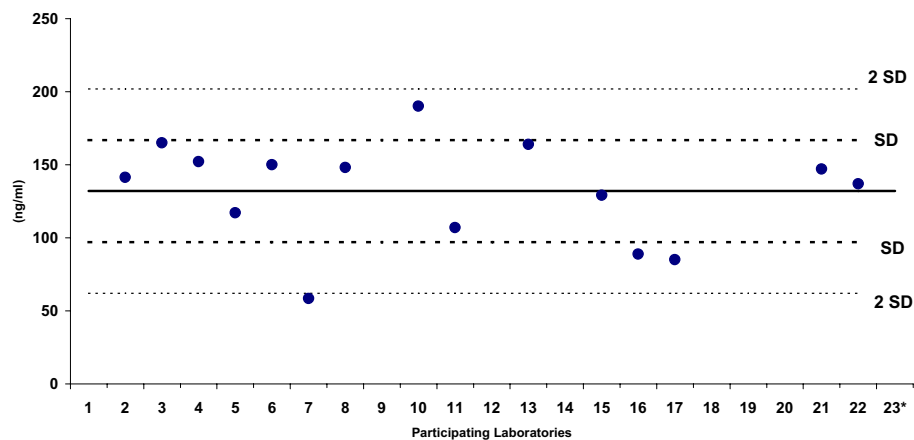
PFT_rDA (RSD 36%, n =11)



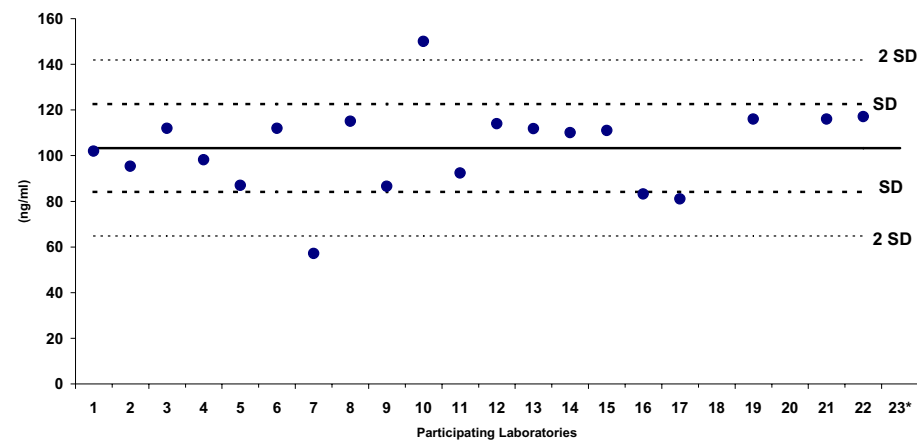
PFT_eDA (RSD 35%, n =12)



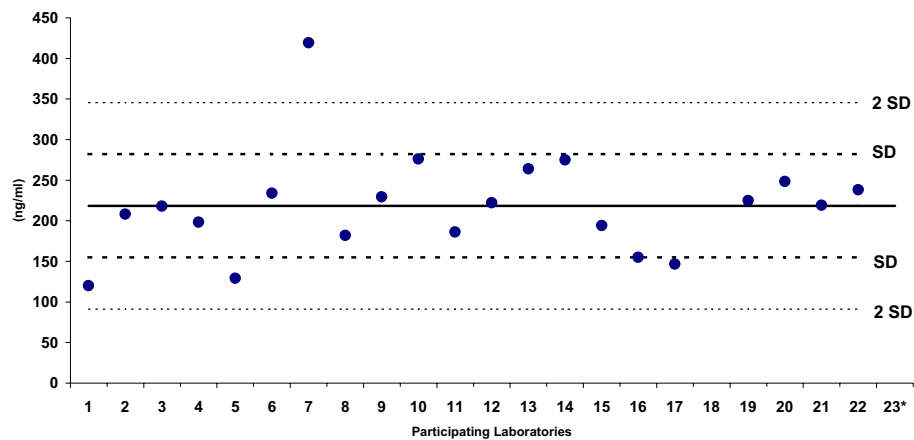
PFBS (RSD 26%, n =15)



PFHxS (RSD 19%, n =20)



PFOS (RSD 29%, n =21)



PFDS (RSD 46%, n =11)

