

The importance of contamination control in screening applications

Katherine Langford

Target v Suspect / Retrospective

- Target



- Example:

Simvastatin in Cod from
Oslofjord

- Suspect



- Example:

Everything in Oslofjord



Recipe = Suspect List

= Retrospective Analysis

Example – Arctic Char, Bjørnøya



NIVA:

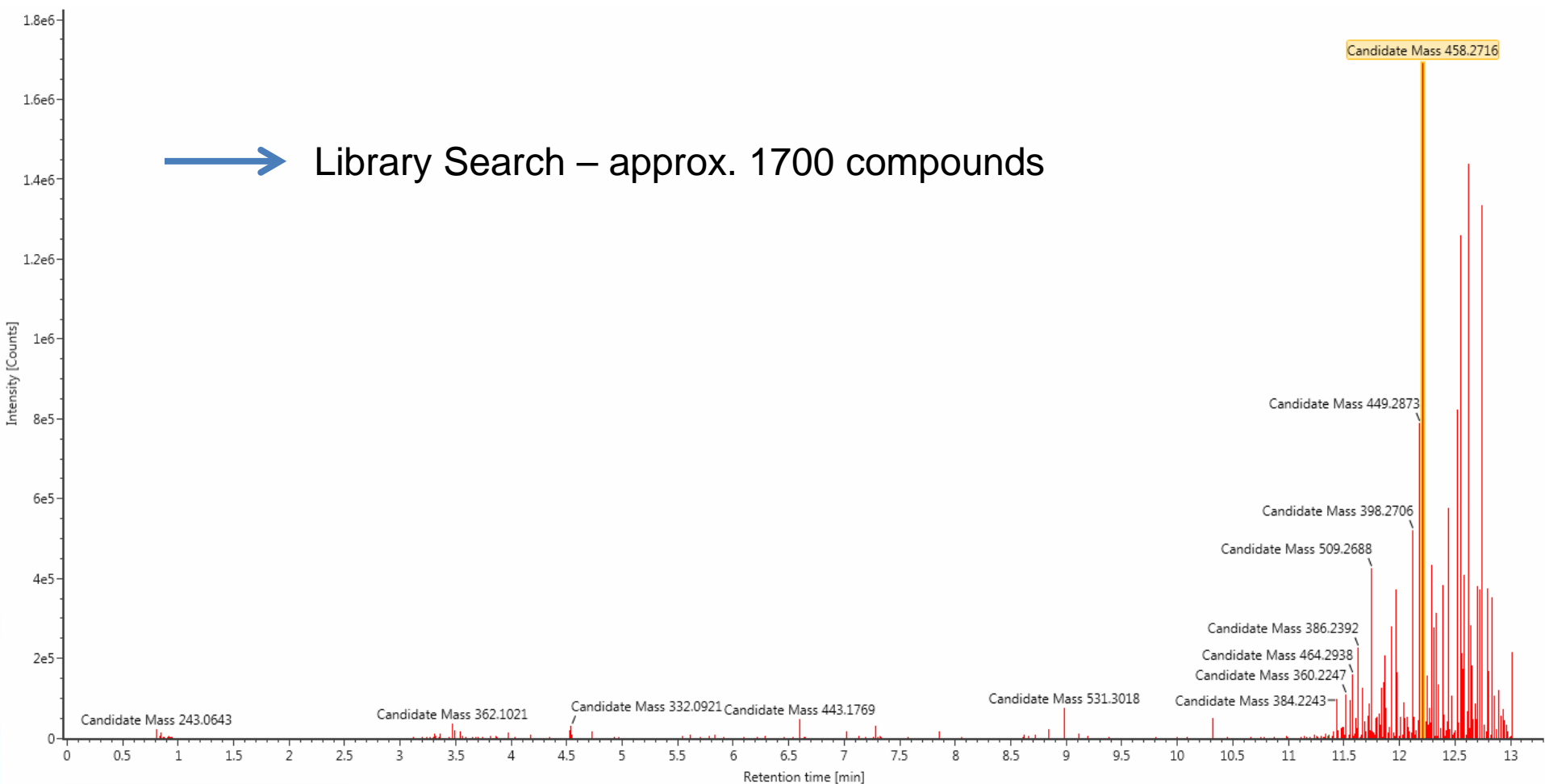
- Merete Grung, Ian Allan, Amanda Poste, Anders Ruus, Alfhild Kringstad, Thomas Rundberget, Kathy Langford, Kine Bæk, Bert van Bavel. Elisabeth Lie

Akvaplan-niva:

- Anita Evenset, Guttorm Christensen, Jenny Bytingsvik

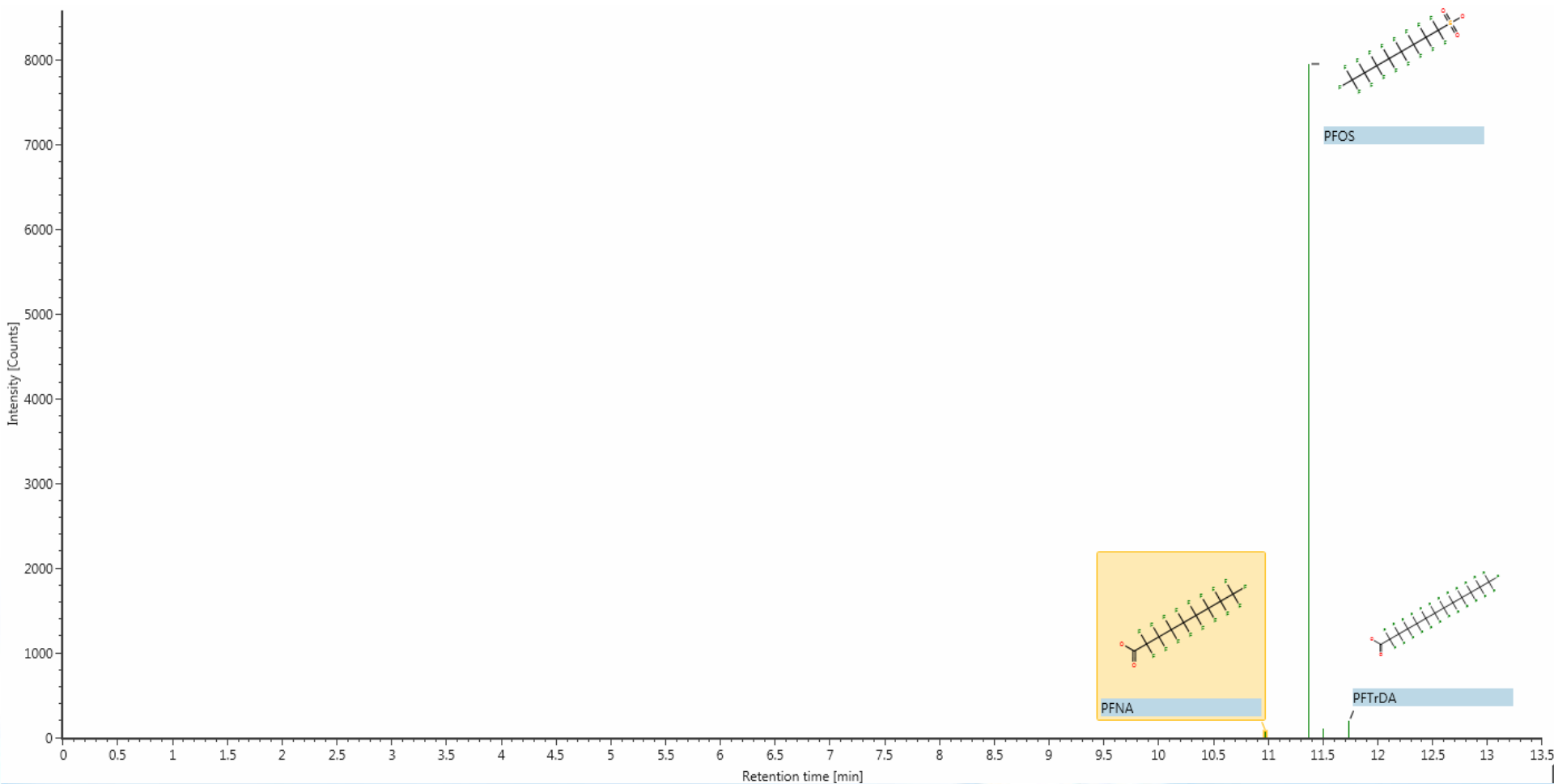
Example – Arctic Char, Bjørnøya

ESI-ve MS: > 9000 peaks



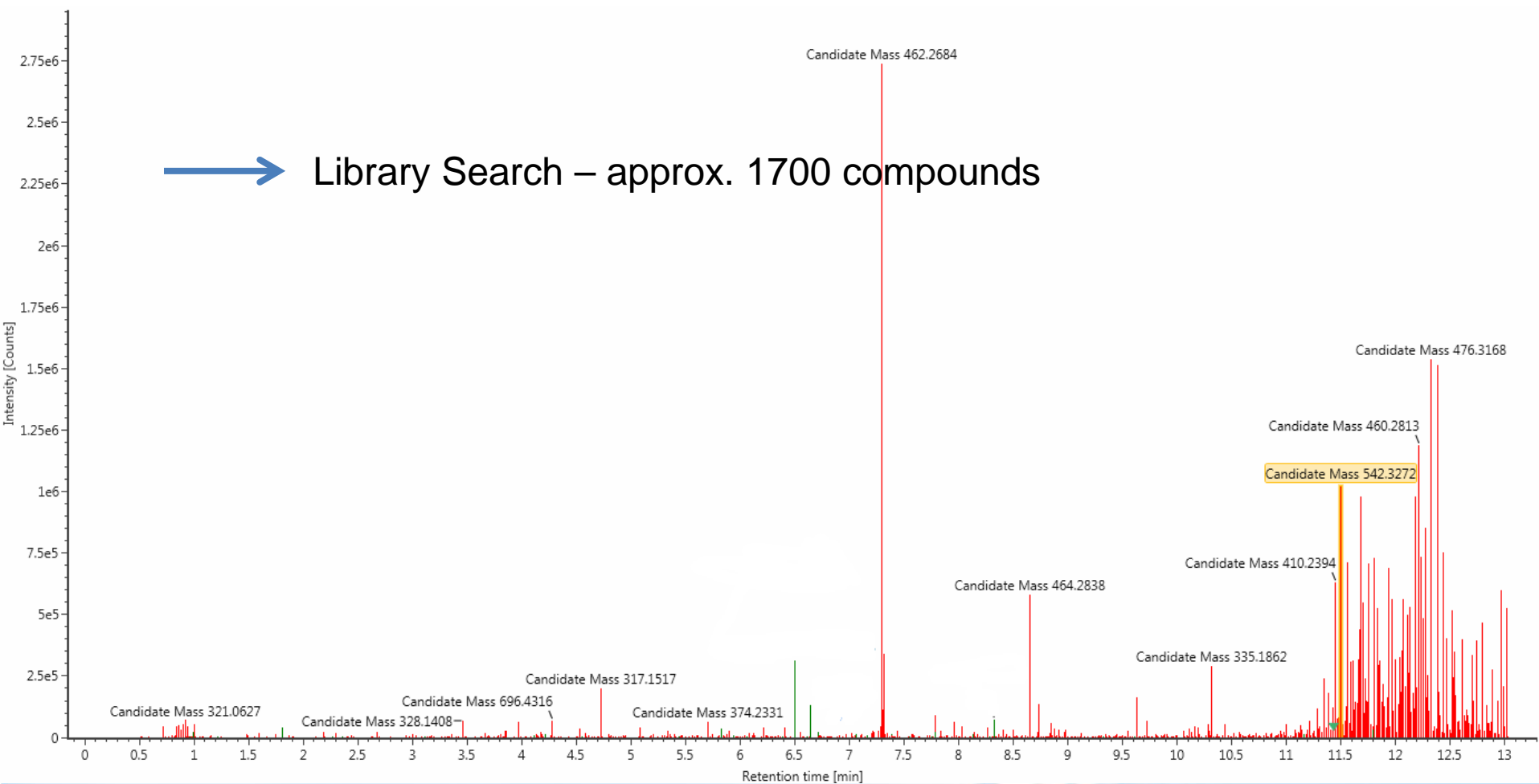
Example – Arctic Char, Bjørnøya

ESI-ve MS: < 10 identified compounds



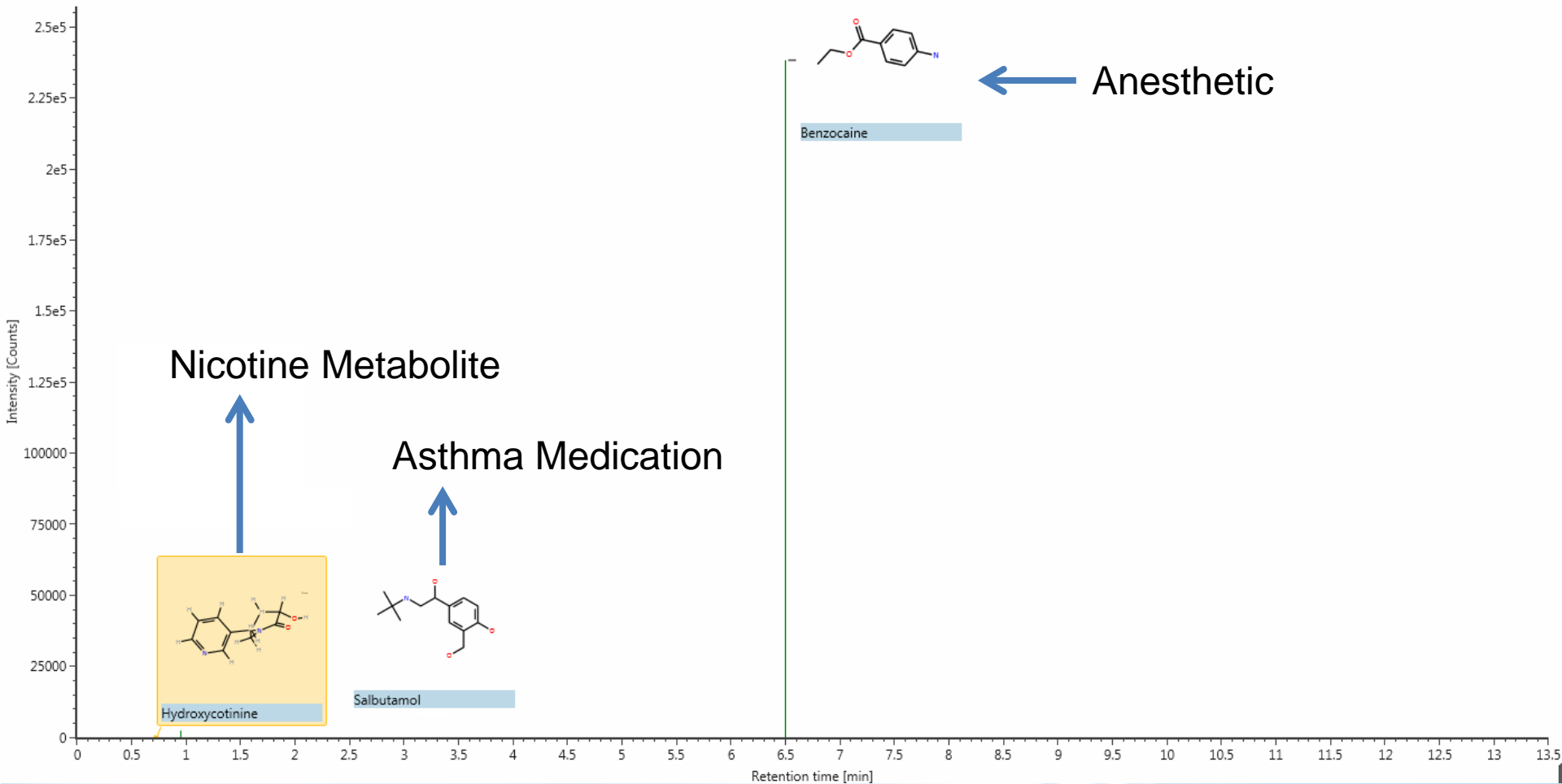
Example – Arctic Char, Bjørnøya

ESI+ve MS: > 8000 peaks



Example – Arctic Char, Bjørnøya

ESI+ve MS: 3 identified compounds



List of Essentials

- "Blank" Samples – Field and Laboratory
- Complete record of sample history
 - Names of all who have been in contact
 - Detail of sample collection procedures
 - Storage and transport conditions (plastic etc)
 - Gloves... what type?
 - Rain jackets... what type?
 - ...
- Thank you