



The NORMAN Network on emerging substances

Valeria Dulio, INERIS
Executive Secretary of the NORMAN Association

Valeria.dulio@ineris.fr

NORMAN – SOLUTIONS Workshop
Paris, 24-25 June 2014



Network of reference laboratories, research centers and related organisations for monitoring of emerging environmental substances

- Former EU-funded FP6 project (2005-2008), established as a **permanent network (NORMAN Association) since 2009**
- >55 members from EU leading organisations (from 19 European countries and Canada)

Mission:

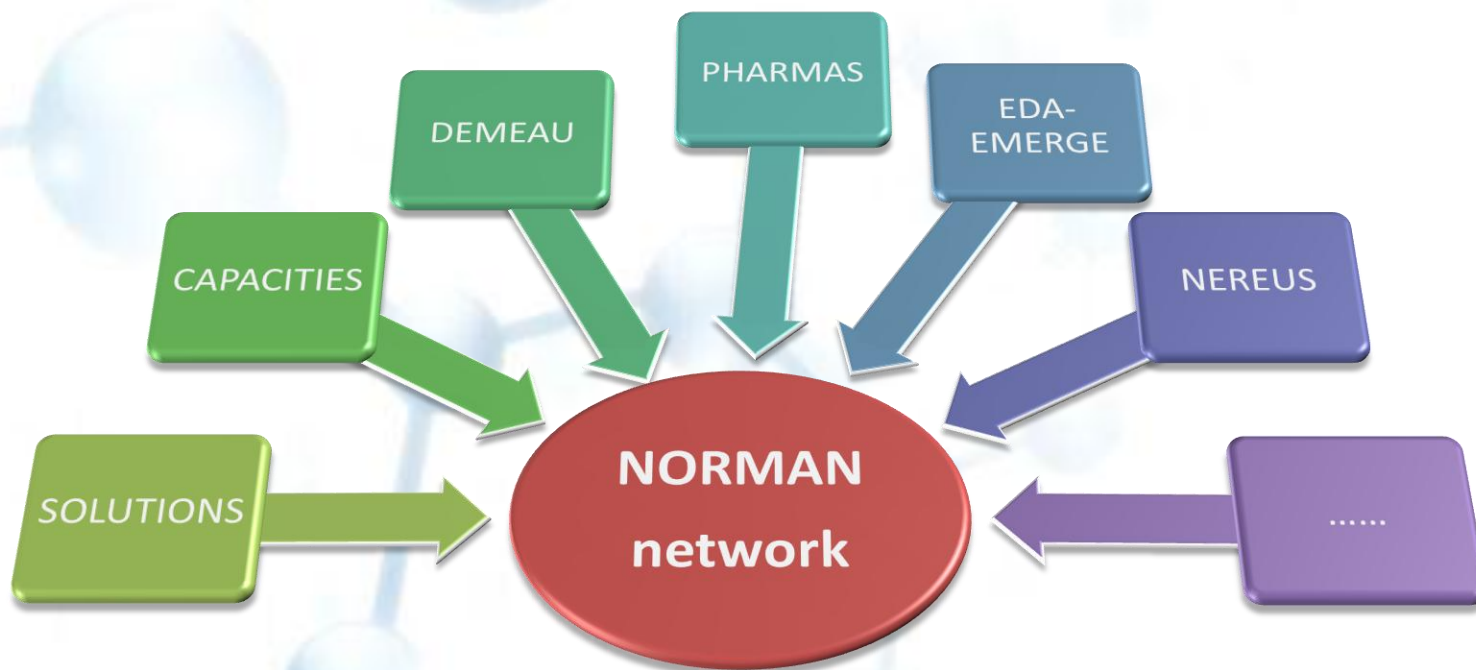
- **Exchange information** on emerging substances
- Improve **data quality**
- Promote **synergies** among research teams and **more efficient transfer** of research findings to **policy-makers**





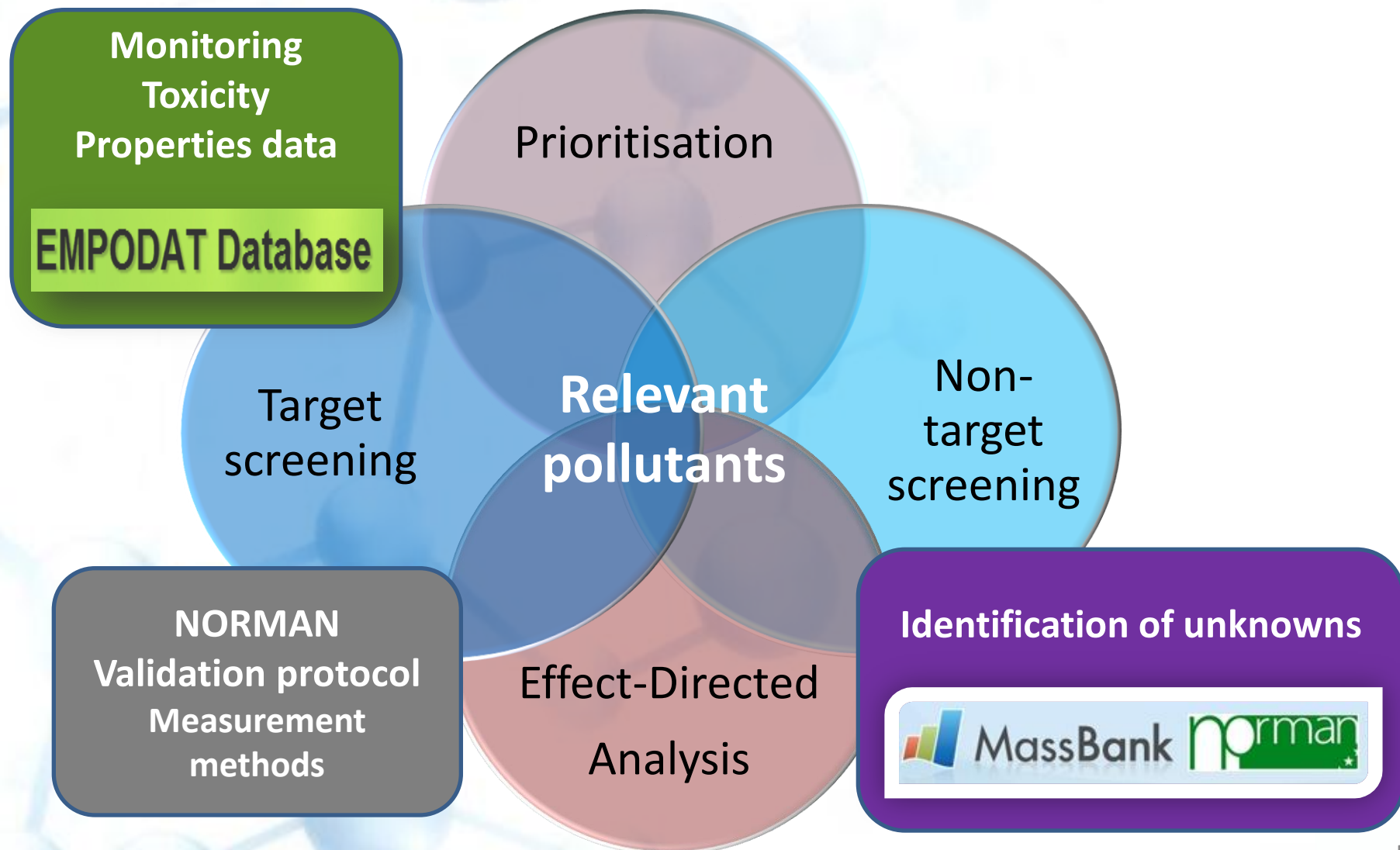
**Network of reference laboratories, research centers
and related organisations for monitoring of
emerging environmental substances
Working Groups**

- 1) Prioritisation**
- 2) Bioassays**
- 3) Effect-Directed Analysis**
- 4) Engineered Nanoparticles**
- 5) Wastewater reuse**
- 6) NEW! Indoor air**



NORMAN needs to **interact as efficiently as possible** with ALL research projects dealing with emerging contaminants (national and international initiatives)

NORMAN activities to identify the relevant emerging pollutants



NORMAN activities to improve harmonisation and quality of monitoring data

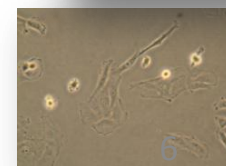
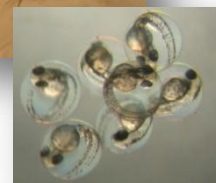
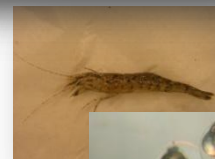
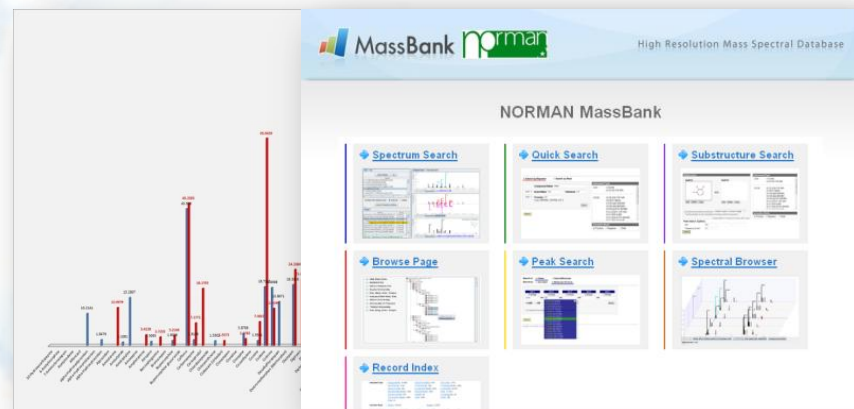
NEW (2013 – 2014)

Collaborative trial **non-target screening** of river water samples

- First time worldwide
- In-depth study on methodologies used by laboratories
- 16-18 Sept 2014 workshop: results and next actions

Interlab study for testing a **battery of *in vitro* bioassays** on concentrated river water samples

- To verify whether bioassays on complex water extracts can be conducted in different laboratories with comparable results
- To promote the use of biotests for water quality monitoring at the level of European policy-makers

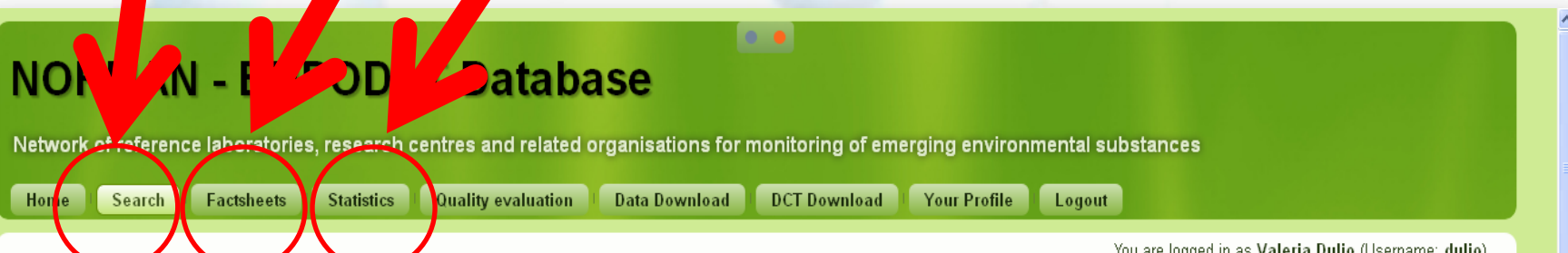


About 3.5 million monitoring data
430 compounds (out of 958) with data

Search

Factsheets

Statistics



Search the database

Please select fields in which you want to search

Search options

- ☐ At least one of the selected criteria must comply
☒ All the selected criteria must comply

If no criteria is selected, the result of search will be the overall database.

Exporting of data into excel is possible only for single matrix, since the structure of datasets is different for each matrix.

Search criteria (for selection of multiple items hold down the CTRL key):

Country

Austria
Belgium
Bulgaria
Croatia
Cyprus

Ecosystems/matrices

Water - Surface water - River water
Water - Surface water - Lake water
Water - Surface water - Transitional water
Water - Surface water - Coastal water
Water - Surface water - Territorial (marine) water

Sampling site/station

Determinand/measurand

So far focus on exposure data!

→ Module for Effect data currently under revision
(action 2014)

Emerging contaminants: FINAL OBJECTIVES

- **Which** are those that have the potential to **adversely impact ecosystems and / or human health** via the environment ?
- **Which** are those that deserve **priority** attention for **further actions**?

A NORMAN – SOLUTIONS workshop to share our visions



...and contribute to improve
prioritisation!



NORMAN

Network of reference laboratories, research centres and related
organisations for monitoring of emerging environmental substances